

first for homes

first for property in life - firstforhomes.co.uk

Contact Allan England's Team
01592 752 944



Forres Drive, Glenrothes

Offers over £112,995

Forres Drive, Glenrothes

Spacious 4-Bed End Terraced Townhouse With Driveway And Garage Situated In Glenrothes, Fife!

Allan England's Award-Winning Team at first for homes are proud to welcome to the market this spacious 4-bed End Terraced Townhouse offering versatile living space for all the family comprising on the ground floor entrance hallway, bedroom 3, stairs to the first floor, spacious lounge/dining area, kitchen, W/C cloaks, stairs the second floor, bedroom 1, bedroom 2, bedroom 4 and family shower room. Externally, there are garden grounds to the front and rear, mono-block driveway and single garage. Viewing is essential to fully appreciate all this stunning home has to offer. Don't miss out!

Call first for homes - First for trust... first for service... first for aftercare.

Home Report Value - £118,000

EPC Rating - D

Council Tax Band - B

Glenrothes is regarded as one of the most successful Towns in Scotland with a wealth of local amenities including Kingdom Shopping Centre as well as sport and leisure at Michael Woods and a multi-screen cinema. Glenrothes boasts its very own 18-hole Golf course and both Primary and Secondary schooling are available. For the commuter the A92 allows swift access to Edinburgh and there are railway stations at both Thornton and Markinch.

- Spacious 4-Bed End Terraced Townhouse, Situated In Glenrothes, Fife!
- Single Garage & MOnoblock Driveway
- Family Bathroom & WC Cloaks
- 4 Generous Sized Bedrooms!
- Spacious Lounge / Dining Area
- Lovely Family Home!
- HOME REPORT - £118,000
- EPC - D
- COUNCIL TAX - B





SITUATION – Glenrothes

ENTRANCE HALLWAY

BEDROOM 3

12'4" x 9'2" approx (3.76m x 2.81m approx)

FIRST FLOOR

LOUNGE / DINER

20'1" x 15'9" approx (6.14m x 4.82m approx)

KITCHEN

8'10" x 9'3" approx (2.71m x 2.83m approx)

CLOAKS / WC

2ND FLOOR

BEDROOM 1

15'11" x 8'5" approx (4.87m x 2.59m approx)

BEDROOM 2

15'11" x 8'5" approx (4.87m x 2.59m approx)

BEDROOM 4

10'1" x 7'1" approx (3.09m x 2.16m approx)

SHOWER ROOM

SINGLE GARAGE

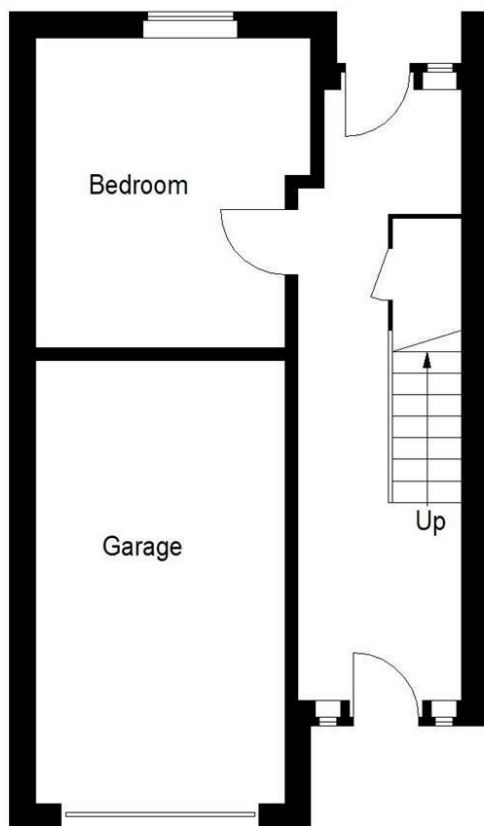
16'4" x 9'2" approx (5m x 2.8m approx)

MONOBLOCK DRIVEWAY

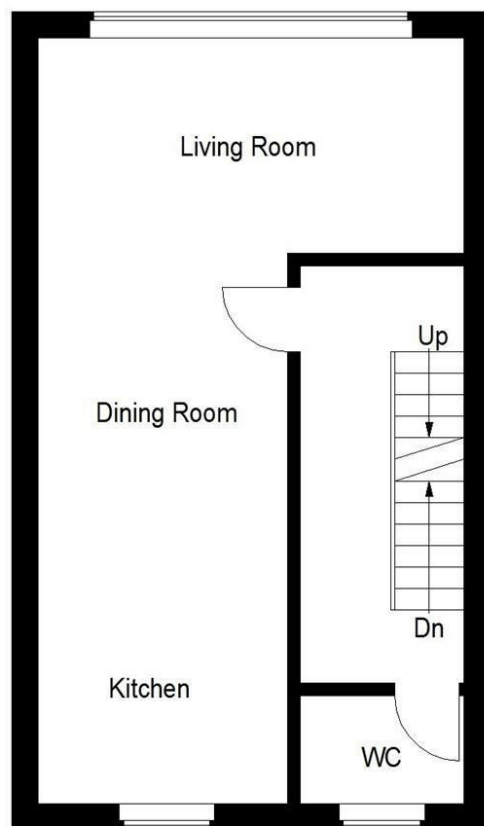
GARDEN GROUNDS

INFORMATION

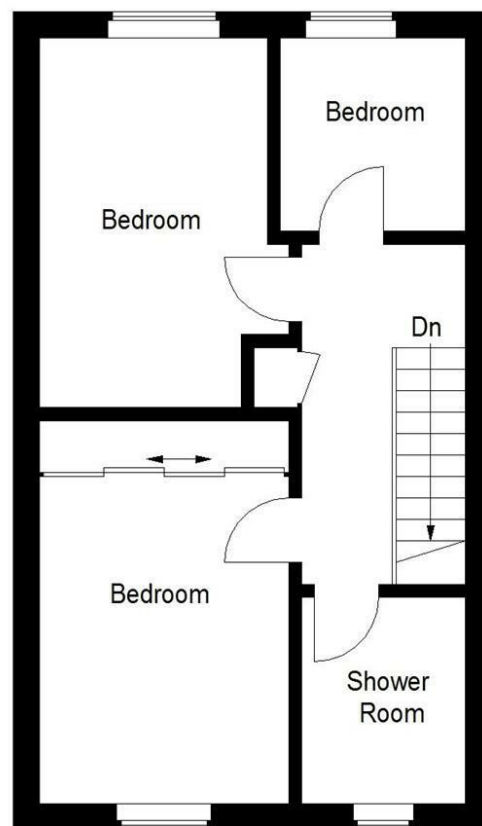




Ground Floor



First Floor



Second Floor

Illustration for identification purposes only, measurements are approximate, not to scale. floorplansUsketch.com © (ID1085257)

Information

These particulars are prepared on the basis of information provided by our clients. We have not tested the electrical system or any electrical appliances, nor where applicable, any central heating system. All sizes are recorded by electronic tape measurement to give an indicative, approximate size only. Prospective purchasers should make their own enquiries – no warranty is given or implied. This schedule is not intended to, and does not form any contract.

FREE Valuation

Selling Your Home?

Choose first for homes - a highly experienced estate agency team you can trust to sell your home at the highest possible price. Offering fantastic savings on selling fees, with no compromise on service, free professional photography highlighting your home in its best light, first for homes will be your first choice. Contact us today to arrange your appointment.



first for trust



first for service



first for aftercare

first for homes

first for property in life - firstforhomes.co.uk

Contact Allan England's Team

01592 752 944

32 North Street, Glenrothes, Fife KY7 5NA

Fax: 01592 807947

sales@firstforhomes.co.uk

www.firstforhomes.co.uk